

CERTIFICATE OF LOCATION OF GOVERNMENT CORNER

SOUTH QUARTER Corner of Section 32, Township 107N, Range 39W

5th Principal Meridian, State of Minnesota, County of MURRAY

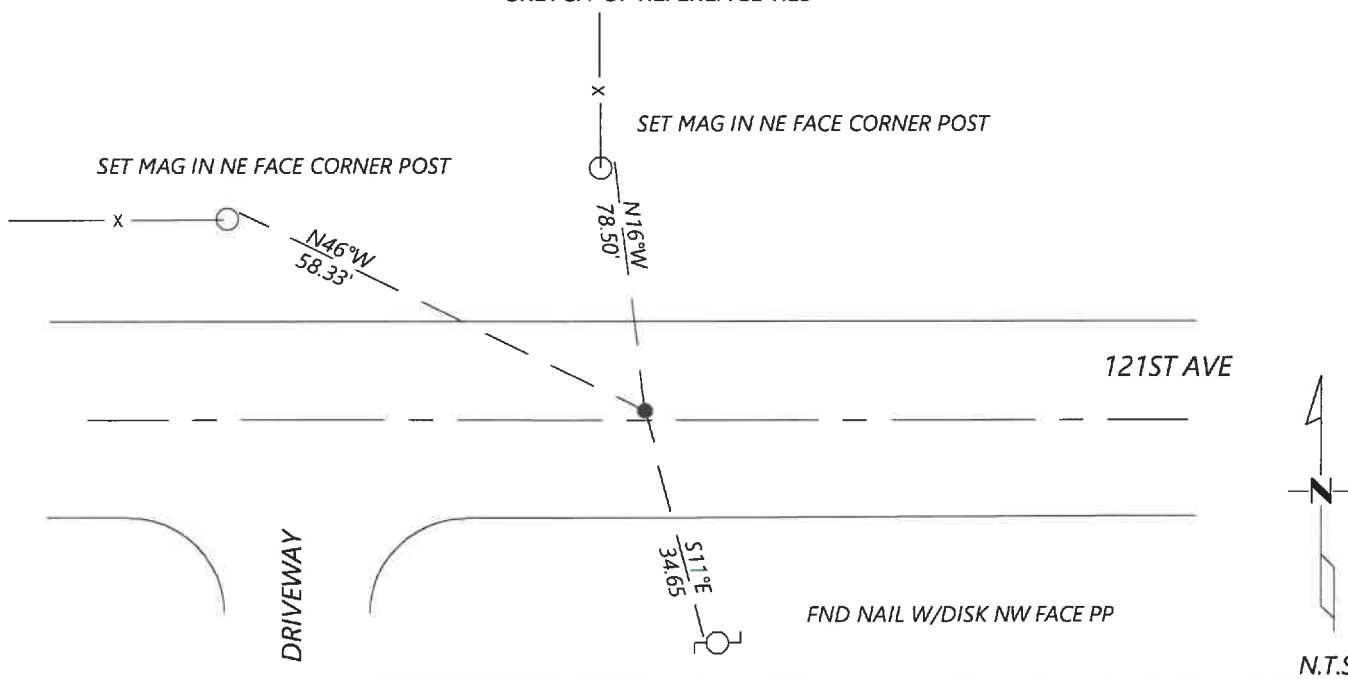
At the corner location shown on the sketch:

On 8/27/2020 found a NO.5 REBAR WITH CAP LS23008 0.5' BELOW GRADE
DATE

left monument as found lowered monument removed monument (explain)

On _____ placed a _____
DATE

SKETCH OF REFERENCE TIES



Statement of evidence for this corner location is on back of this page.

I hereby certify that this document was researched and prepared by me or under my direct supervision and that I am a licensed Land Surveyor under the laws of the State of Minnesota.

Signature [Handwritten Signature]

Date 6/16/2021 License No. 45874

Title:

- Land Surveyor Professional Engineer
- County Surveyor County Engineer

OFFICE OF THE COUNTY RECORDER

County of Murray

I hereby certify that this document was filed in the Co.

Recorder's office at _____ M. on the _____ day of _____ A.D. 20

County Recorder Karen Brown
by JIN 22 2021, Deputy

DOCUMENT NO. _____

JASON LATZKE
Minnesota License No. 45874

Statement of Evidence:

South Quarter Corner of Section 32, Township 107 North, Range 39 West, 5th Principal Meridian, Murray County, Minnesota.

JUNE 6, 1895 - SURVEY RECORD FOR SECTION 5 SHOWS POST AND PITS IN SMALL SLOUGH. PLACED 12Z12X24 STONE.

9/05/2007 - CORNER CERTIFICATE FILED BY PERRY ZIESKE SHOWS THAT HE DUG AND FOUND STONE AT THE CORNER. HE LISTS THE MURRAY COUNTY COORDINATES AS N 163460.50 E 556245.36.

5/16/2017 - A SURVEY IN SECTION 32 BY ZIESKE LAND SURVEYING SHOWS A FOUND 15X11 STONE AT THE CORNER.

SEPTEMBER 2020 - WESTWOOD PROFESSIONAL SERVICES SEARCHED AND FOUND IRON W/ CAP LS 23008. POSITION FITS COORDINATES LISTED PER 2007 CORNER CERTIFICATE AND 2017 SURVEY. ACCEPTED MONUMENT AND ESTABLISHED NEW REFERENCE TIES.

Analysis of the recovered data, field evidence and survey measurements, indicates that the monument found is the correct perpetuation of this corner. For additional information concerning this corner please contact Westwood Professional Services.